

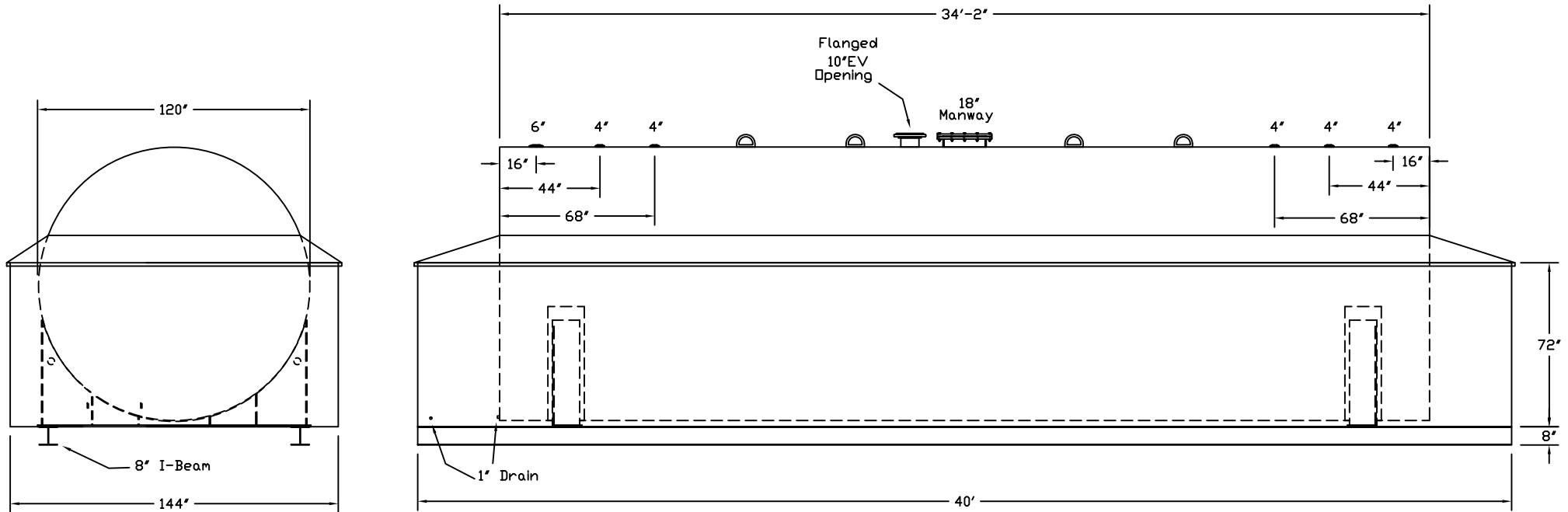
Stanwade Metal Products, Inc.  
 6868 State Route 305 PO Box 10  
 Hartford, Ohio 44424  
 Phone: 800-826-5243 Fax: 1-330-772-3307  
 www.tankstore.com

Tank is for stationary use only

Capacity 20,000 Gallons Heads Primary 1/4" Paint Ext. Red Primer  
 Design Dike/Rainshield Shell Primary 1/4" Paint Int. \_\_\_\_\_  
 Code UL 142 Heads Secondary \_\_\_\_\_ Weight Empty 35,000 lbs.  
 Test Pres. 5 PSI Shell Secondary \_\_\_\_\_

Rev.# \_\_\_\_\_ Date: \_\_\_\_\_

Dike/Rainshield: 1/4"  
 Dike Capacity: 21,500 gallons



Customer: \_\_\_\_\_ Drg. Date: \_\_\_\_\_

Drawing Approved By: \_\_\_\_\_

Quoted Lead Times Begin Upon Receipt of signed Approved Drawing, Which Must be Returned Before Production Can Begin.