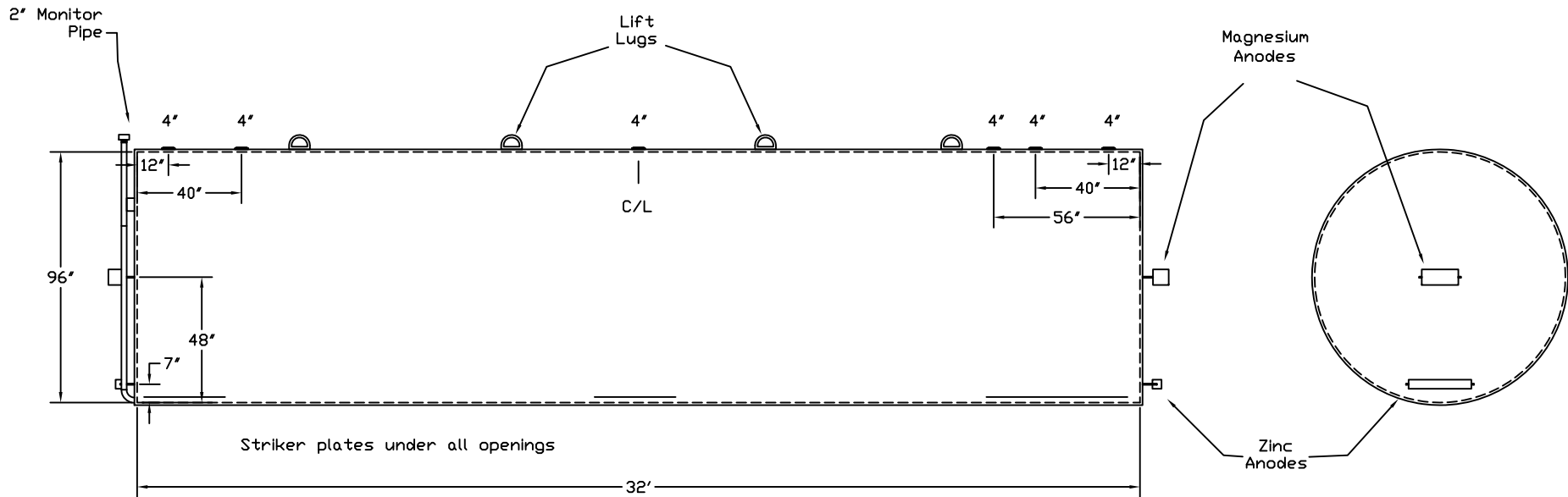


Stanwade Metal Products, Inc.  
 6868 State Route 305 PO Box 10  
 Hartford, Ohio 44424  
 Phone: 800-826-5243 Fax: 1-330-772-3307  
 www.tankstore.com

Capacity \_\_\_\_\_ 12,000 Gallons \_\_\_\_\_  
 Design \_\_\_\_\_ Doublewall UG \_\_\_\_\_  
 Code \_\_\_\_\_ UL 58 STI-P3 \_\_\_\_\_  
 Test Pres. \_\_\_\_\_ 5 PSI \_\_\_\_\_  
 Heads Primary \_\_\_\_\_ 1/4" \_\_\_\_\_  
 Shell Primary \_\_\_\_\_ 1/4" \_\_\_\_\_  
 Heads Secondary \_\_\_\_\_ 1/4" \_\_\_\_\_  
 Shell Secondary \_\_\_\_\_ 10 Gauge \_\_\_\_\_

Paint Ext. \_\_\_\_\_ Black Urethane \_\_\_\_\_  
 Paint Int. \_\_\_\_\_ \_\_\_\_\_  
 Weight Empty \_\_\_\_\_ 17,700 lbs. \_\_\_\_\_  
 Rev.# \_\_\_\_\_ Date: \_\_\_\_\_



Customer: \_\_\_\_\_ Drg. Date: \_\_\_\_\_

Quoted Lead Times Begin Upon Receipt of signed Approved Drawing, Which Must be Returned Before Production Can Begin.

Drawing Approved By: \_\_\_\_\_