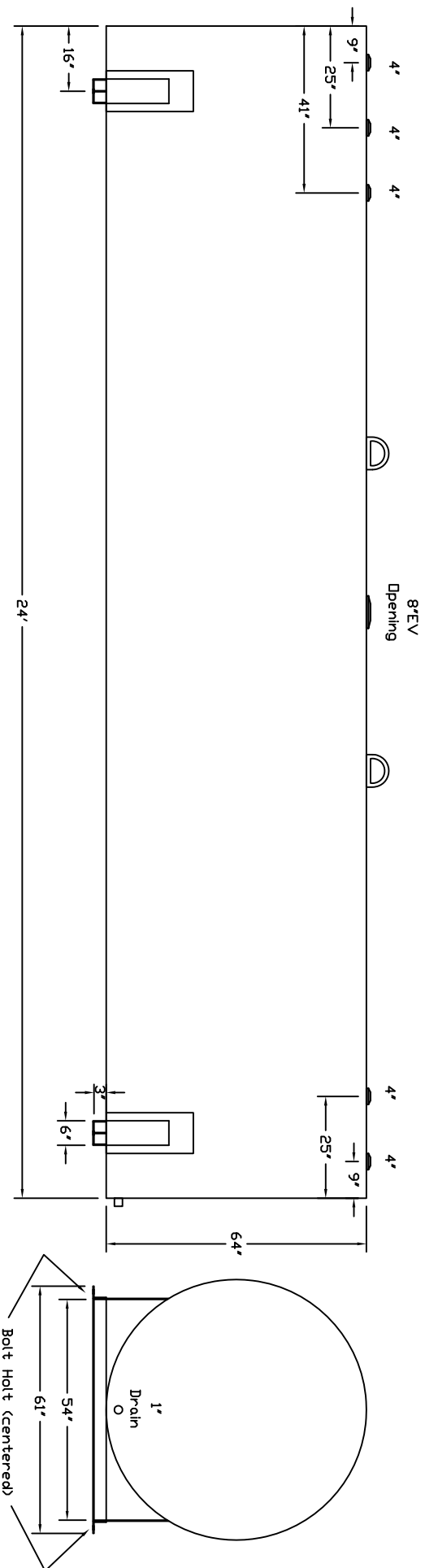


Starwade Metal Products, Inc.
 6868 State Route 305 PD Box 10
 Hartford, Ohio 44424
 Phone: 800-826-5243 Fax: 1-330-772-3307
 www.tankstore.com

Tank is for stationary use only

Capacity	4,000 Gallons	Heads	Primary	7 Gauge	Paint Ext.	Red Primer
Design	Aboveground Singletail	Shell Primary	7 Gauge	Paint Int.		
Code	UL 142	Heads Secondary		Weight Empty	4,100 lbs.	
Test Pres.	5 PSI	Shell Secondary		Rev.#		Date:



Customer: _____ Drg. Date: _____ Drawing Approved By: _____

Quoted Lead Times Begin Upon Receipt of signed Approved Drawing, which Must be Returned Before Production Can Begin.