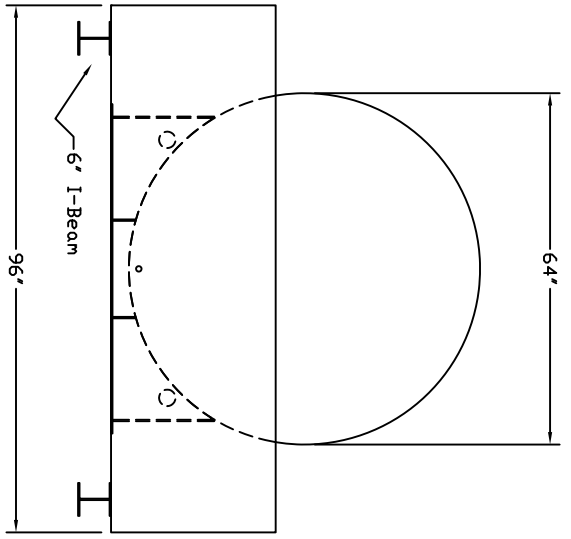
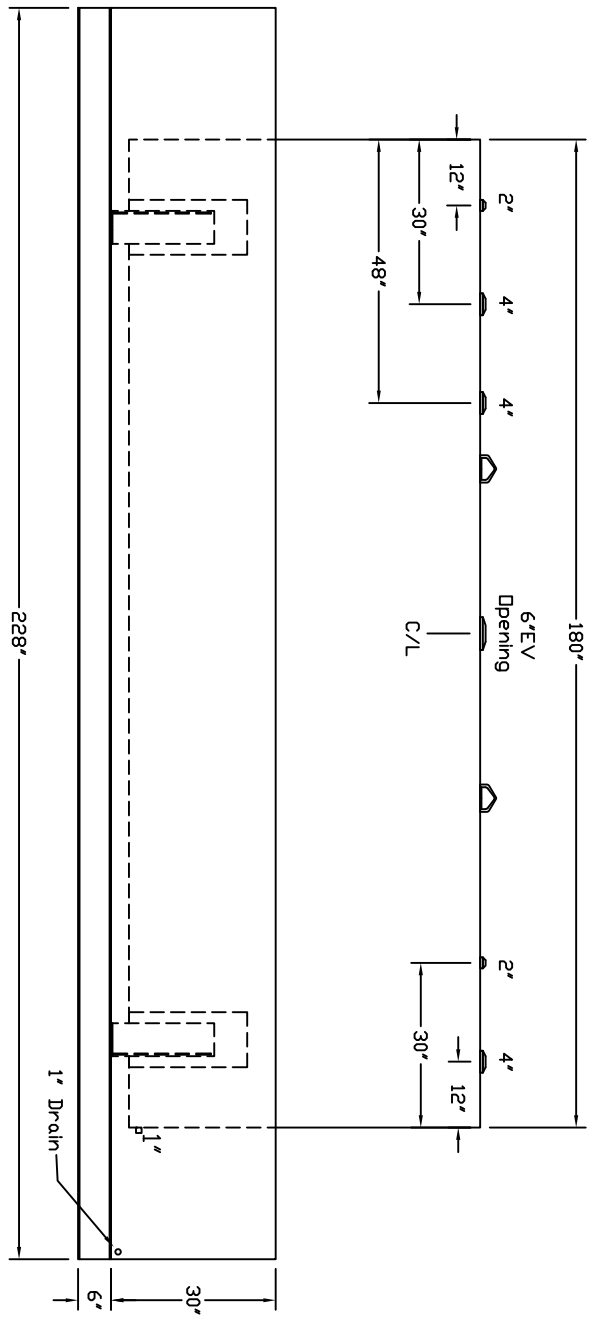


Starwade Metal Products, Inc.
 6868 State Route 305 PD Box 10
 Hart-Ford, Ohio 44424
 Phone: 800-826-5243 Fax: 1-330-772-3307
 www.tankstore.com

Tank is for stationary use only

Capacity	2,500 Gallons	Heads Primary	1/4"	Paint Ext.	Red Primer
Design	Singlewall AG	Shell Primary	1/4"	Paint Int.	
Code	UL 142	Heads Secondary		Weight Empty	6,350 lbs.
Test Pres.	5 PSI	Shell Secondary		Rev.#	Date:

Dike is 1/4' construction
 Dike Capacity: 2,800 Gallons



Customer: _____ Drg. Date: _____
 Quoted Lead Times Begin Upon Receipt of signed Approved
 Drawing, Which Must be Returned Before Production Can Begin.

Drawing Approved By: _____
