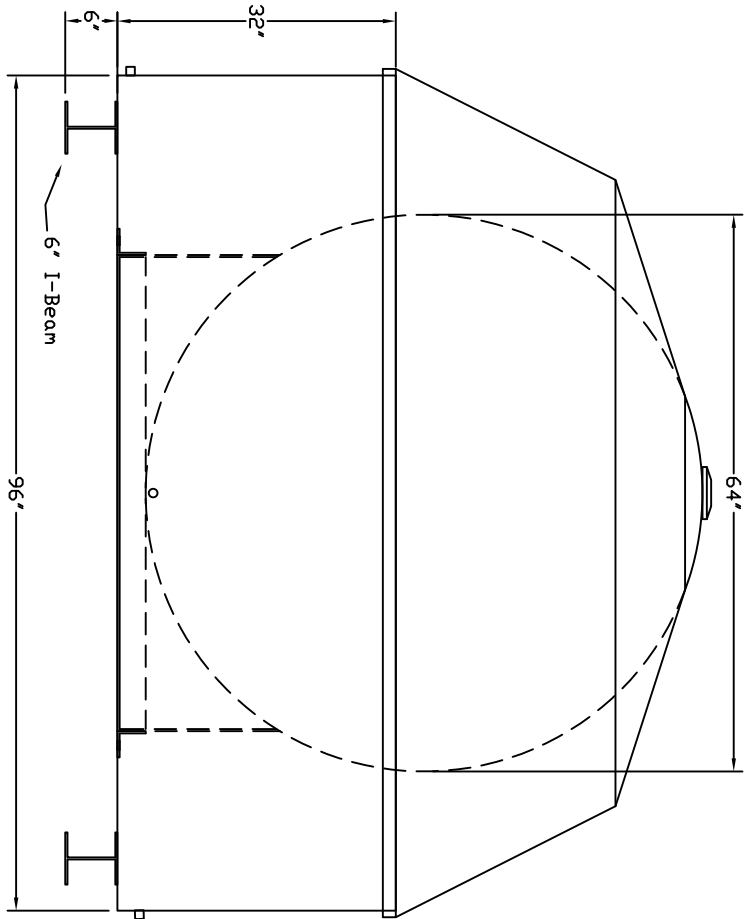
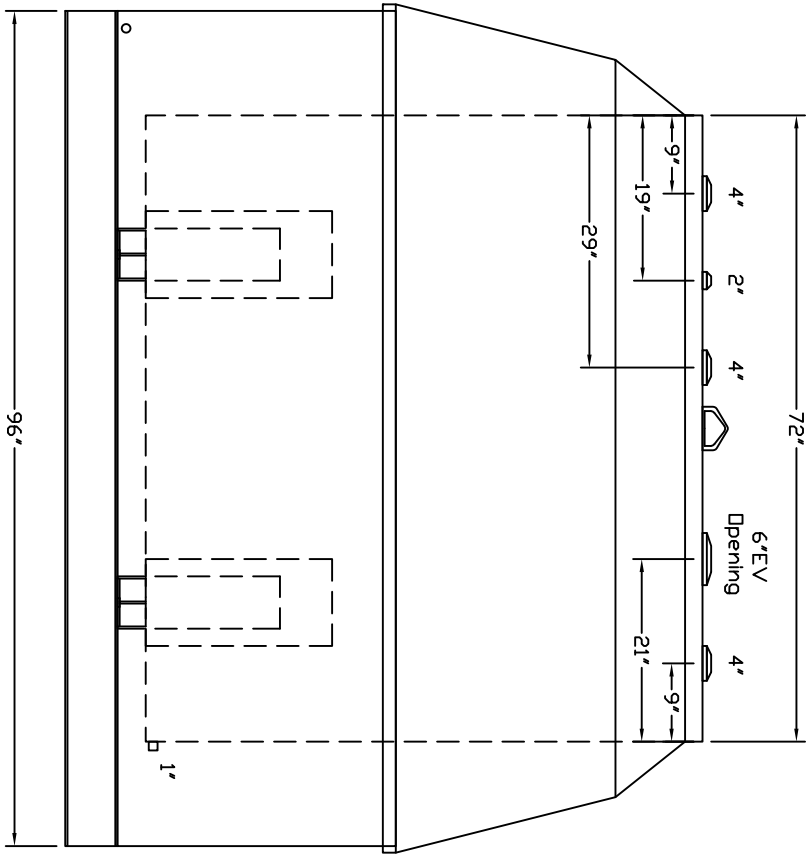


Starwade Metal Products, Inc.  
 6868 State Route 305 PD Box 10  
 Hartford, Ohio 44424  
 Phone: 800-826-5243 Fax: 1-330-772-3307  
 www.tankstore.com

Tank for stationary use only

Capacity	1,000 Gallons	Heads Primary	7 Gauge	Paint Ext.	Red Primer
Design	Dike/Rainshield	Shell Primary	7 Gauge	Paint Int.	
Code	UI 142	Heads Secondary		Weight Empty	3,505 lbs.
Test Pres.	5 PSI	Shell Secondary		Rev.#	Date:

Dike Sides/Rainshield: 7 Gauge  
 Dike Bottom: 1/4"  
 Dike Capacity: 1275 Gallons



Customer: \_\_\_\_\_

Drq. Date: \_\_\_\_\_

Drawing Approved By: \_\_\_\_\_

Quoted Lead Times Begin Upon Receipt of signed Approved Drawing, Which Must be Returned Before Production Can Begin.