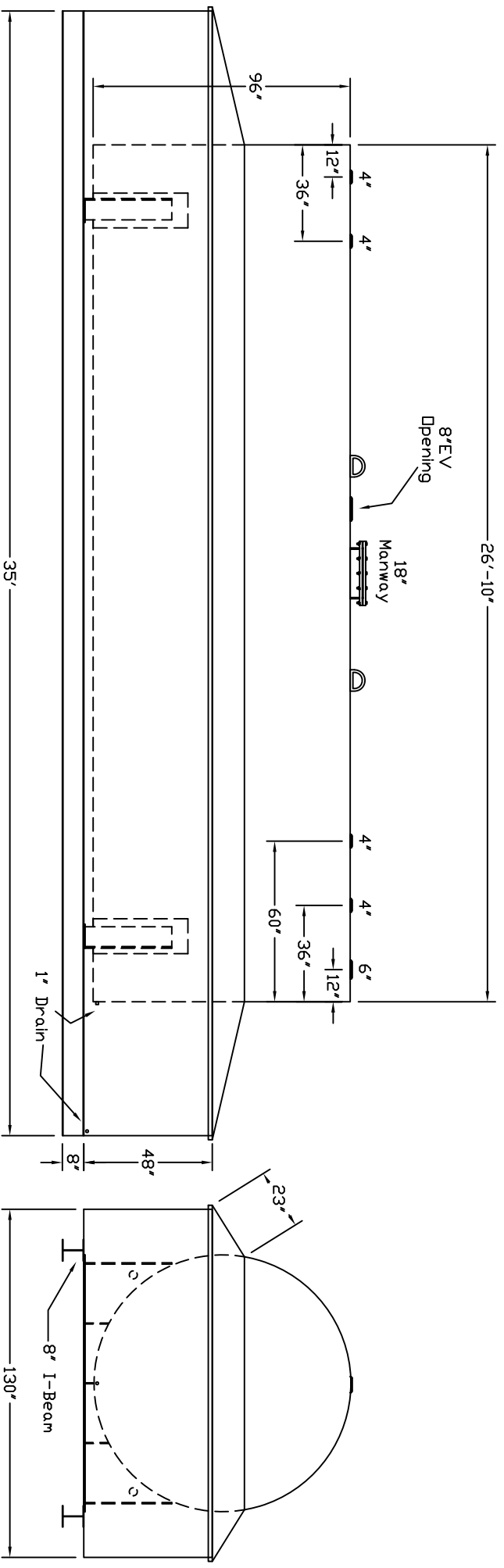


Starwade Metal Products, Inc.
 6868 State Route 305 PD Box 10
 Harttford, Ohio 44424
 Phone: 800-826-5243 Fax: 1-330-772-3307
 www.tankstore.com

Tank For Stationary Use Only

Capacity	10,000 Gallons	Heads	Primary	1/4"	Paint Ext.	Red Primer
Design	Dike/Rainshield	Shell Primary	1/4"	Paint Int.		
Code	UL 142	Heads Secondary		Weight Empty	25,500 lbs.	
Test Pres.	5 PSI	Shell Secondary		Rev.#	Date:	
		Dike/Rainshield:	1/4"			
		Dike Capacity:	11,300 gallons			



Customer: _____ Drg. Date: _____ Drawing Approved By: _____
 Quoted Lead Times Begin Upon Receipt of signed Approved Drawing, Which Must be Returned Before Production Can Begin.