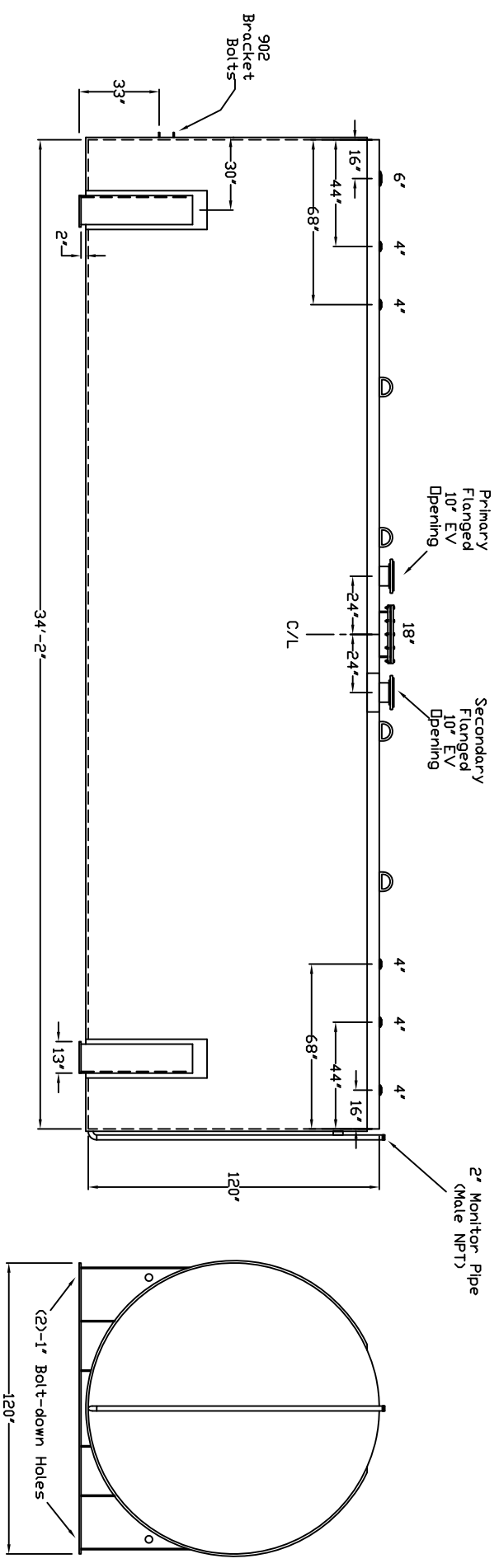


Starwade Metal Products, Inc.
 6868 State Route 305 PD Box 10
 Hart-ford, Ohio 44424
 Phone: 800-826-5243 Fax: 1-330-772-3307
 www.tankstore.com

Tank For Stationary Use Only

| | | | | | | |
|------------|----------------|-----------------|---------|--------------|-------------|------------|
| Capacity | 20,000 Gallons | Heads | Primary | 1/4" | Paint Ext. | Red Primer |
| Design | AG Dual Wall | Shell Primary | 1/4" | Paint Int. | | |
| Code | UL 142 | Heads Secondary | 1/4" | Weight Empty | 27,000 lbs. | |
| Test Pres. | 5 PSI | Shell Secondary | 7 Ga. | Rev.# | Date: | |



Customer: _____ Drg. Date: _____ Drawing Approved By: _____

Quoted Lead Times Begin Upon Receipt of signed Approved Drawing, which Must be Returned Before Production Can Begin.