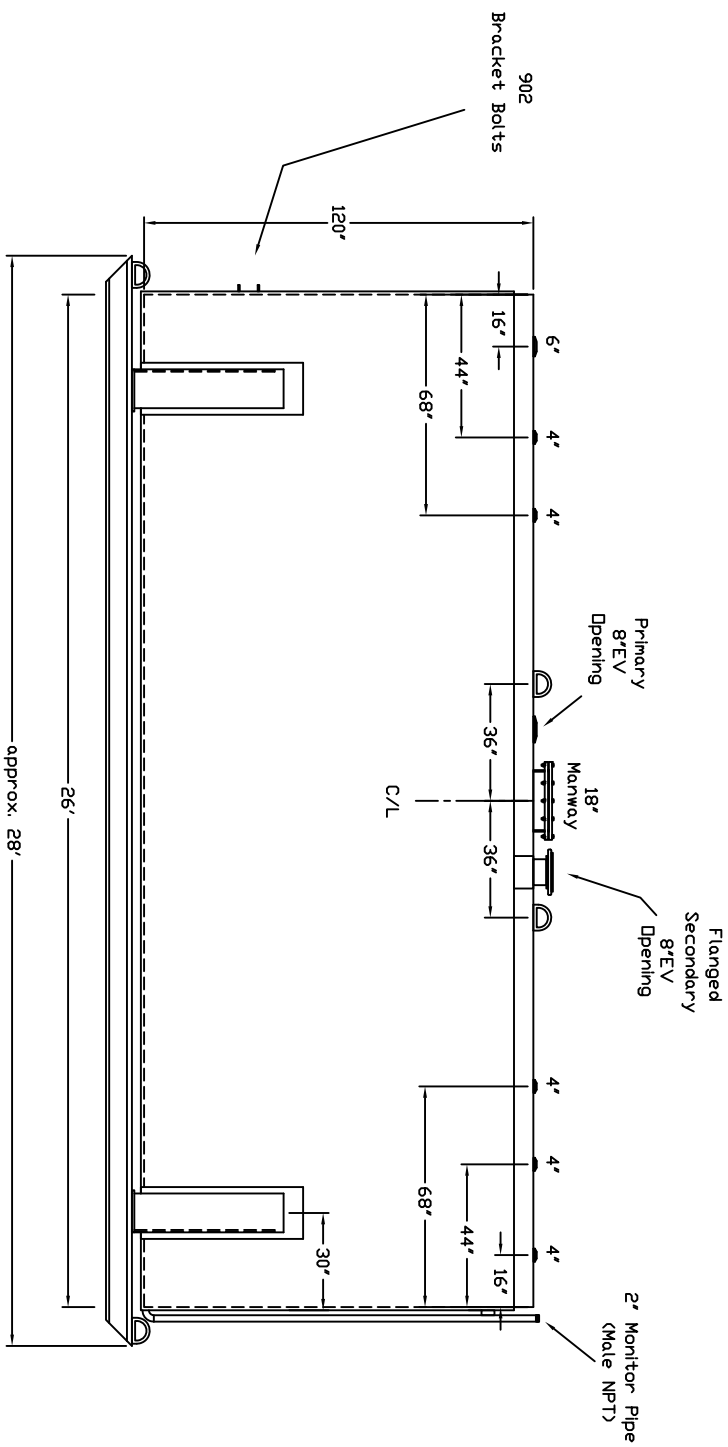
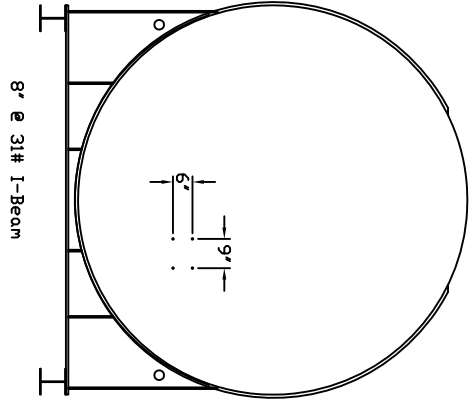


Storwade Metal Products, Inc.  
 6868 State Route 305 PD Box 10  
 Hartford, Ohio 44424  
 Phone: 800-826-5243 Fax: 1-330-772-3307  
 www.tankstore.com



Tank For Stationary Use Only

Capacity	15,000 Gallons	Heads	Primary	1/4"	Paint Ext.	Write Urethane
Design	Doublewall Beamskid	Shell Primary	1/4"	Paint Int.		
Code	UL 142 Flameshield	Heads Secondary	1/4"	Weight Empty	23,200 lbs.	
Test Pres.	5 PSI	Shell Secondary	7 Ga.	Rev.#		Date:



Customer: \_\_\_\_\_ Drg. Date: \_\_\_\_\_ Drawing Approved By: \_\_\_\_\_  
 Quoted Lead Times Begin Upon Receipt of signed Approved Drawing, Which Must be Returned Before Production Can Begin.